



2026 HR Boot Camp

Speaking Engagements & Seminars

05.15.2026

Presented by: Peter L. Frattarelli, Kyra G. Bradley, Scott A. Sears, Yvette C. Cave, Douglas Diaz

Archer **Labor & Employment** attorneys will present the 2026 Chamber of Commerce of Southern New Jersey's Annual "HR Boot Camp."

To register, click [here](#).

The banner features a dark background with red and white text. At the top left is the Chamber of Commerce Southern New Jersey logo with the tagline "Connecting the region since 1873". To its right is the Archer & Greiner PC logo. Further right, the word "PRESENTS" is enclosed in a white-outlined parallelogram. Below these logos, the text "AN ANNUAL LAW EMPLOYMENT UPDATE" is written in a bold, red, sans-serif font. The main title "HR BOOT CAMP" is displayed in large, bold, red letters with a white outline. At the bottom, the date "Friday, May 15, 2026" is written in white, followed by the time and location "8:00 A.M. - 12:00 P.M. | The Legacy Club" and the address "300 E Evesham Road, Cherry Hill, NJ" in white.

CHAMBER OF COMMERCE
SOUTHERN NEW JERSEY
Connecting the region since 1873

ARCHER
& GREINER PC
ATTORNEYS AT LAW

PRESENTS

AN ANNUAL LAW EMPLOYMENT UPDATE

HR BOOT CAMP

Friday, May 15, 2026
8:00 A.M. - 12:00 P.M. | The Legacy Club
300 E Evesham Road, Cherry Hill, NJ

RECRUITING AND HIRING EMPLOYEES



PRESENTED BY

Peter L. Frattarelli, Esq.

Partner, Archer & Greiner P.C.

This presentation will cover the legal basics for employers to follow in recruiting, hiring and promoting job applicants and employees. This will include an update on the latest changes to ban-the-box laws, pay transparency laws and salary fairness (glass ceiling) laws and regulations.

AI AND THE WORKPLACE



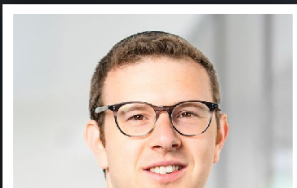
PRESENTED BY

Kyra G. Bradley, Esq.

Associate, Archer & Greiner P.C.

This presentation will highlight the latest legal issues that employers face in using Artificial Intelligence in the workplace, and specifically, how AI can (and cannot) be used in hiring, discipline and termination decisions. This will also update the audience on recent regulations that seek to avoid disparate or discriminatory impact from the use of AI in the workplace.

INDEPENDENT CONTRACTORS VERSUS EMPLOYEES



PRESENTED BY

Scott A. Sears, Esq.

Associate, Archer & Greiner P.C.

This presentation will provide an overview of the legal pitfalls that





employers need to avoid when determining whether individuals performing services for the company are employees or instead can be classified as independent contractors. Recent case decisions will be reviewed, as courts are continuing to grapple with whether employers' classification of independent contractors is permissible, under the various federal and state legal tests.

THE BASICS OF INTERNAL INVESTIGATIONS



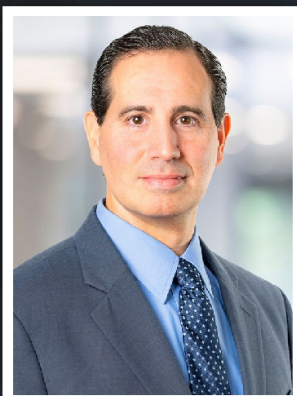
PRESENTED BY

Yvette C. Cave, Esq.

Associate, Archer & Greiner P.C.

This presentation will provide a nuts and bolts overview of how employers should handle internal investigations, including whether an investigation is required and the mechanics of conducting the investigation. And, from a legal perspective, employers will learn how to use the investigation as a preparation for possible litigation, and also how certain privileges, such as the attorney-client privilege, can be preserved.

HANDLING WORKPLACE ACCOMMODATIONS



PRESENTED BY

Douglas Diaz, Esq.

Partner, Archer & Greiner P.C.

Handling Workplace Accommodations – This presentation will summarize employers' obligations under federal and state disability laws to accommodate employees' medical issues, which run the gamut from job modifications to job transfers to time off. This will also provide an overview of how accommodations must be addressed when the employee is simultaneously entitled to a total or partial leave of absence under family and medical leave laws

Attendees will be eligible to receive the following credits for this session:



- **New Jersey CLE: 3.5 General (pending approval)**
- **Pennsylvania CLE: 2.5 Substantive (pending approval)**
- **HRCI: 2.75 General Recertification Hours (pending approval)**

\$55 for Early Registration **\$65** for Late Registration (after May 4)

TO REGISTER, VISIT WWW.CHAMBERSNJ.COM

Are you a non-member interested in joining the **CCSNJ**? Contact Lynn Bradley at lbradley@chambersnj.com or (609) 377-7149.

Questions about this event? Contact Stefanie Sutton at ssutton@chambersnj.com

Related People

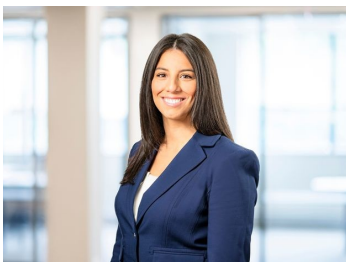


Kyra G. Bradley

Associate

✉ kbradley@archerlaw.com

☎ 856.258.7974

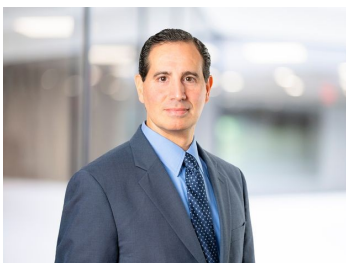


Yvette C. Cave

Associate

✉ ycave@archerlaw.com

☎ 856.673.7154



Douglas Diaz

Partner

✉ ddiaz@archerlaw.com

☎ 856.616.2614

Related Services

- Labor & Employment

